

Proposed Pricing:

MTSS Dashboard

Product Name	2-Year Total Cost April 2024 -June,2026
MTSS Dashboard	\$218,500.65
Professional Development	\$60,000
Total	\$278,500.65

Pricing Includes:	
MTSS Dashboard	<ul style="list-style-type: none">• Integration of student information system to pull in grades, behavior/discipline and attendance data & standard filters into Student Success platform• Integration of academic assessments & diagnostic tools into Student Success platform• Intervention tracking• Access to Student Success platform for teachers, student support staff, school administrators, and district administrators
Training & Professional Development	<ul style="list-style-type: none">• Comprehensive Focused Advising - Monthly or 12x annually MTSS advising support with a dedicated professional learning advisor• 4 Onsite Trainings, each onsite facilitation includes a consultative planning session with a professional learning specialist and up to 6 hours of onsite facilitation for groups <50 (> 50 participants or concurrent sessions can be supported with additional facilitators at an additional cost).• Professional Development Workshops (Virtual) - 4 sessions Includes one virtual consultative planning session with a professional learning manager/director and up to 90 minutes of virtual facilitation or consultations for groups <50.

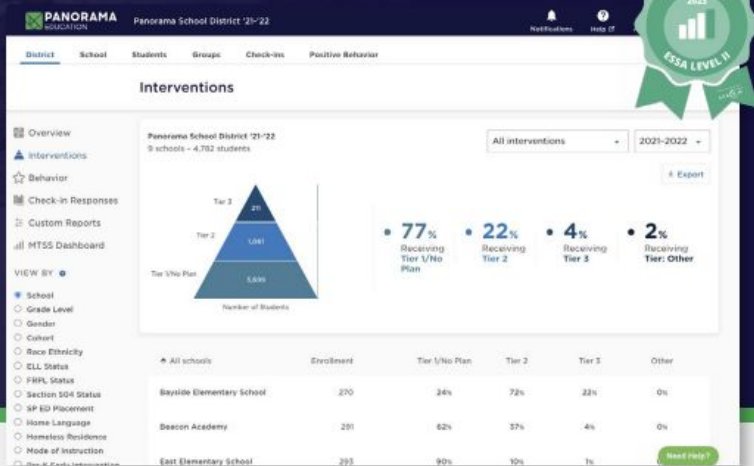
Surveys 24-26 Renewal

Product Name	2-Year Total Cost (5% Multi-year discount)
Check Ins	\$12,350
Professional Development	\$6,000
Student Surveys	\$55,575
Teacher/Staff Surveys	\$24,700
Family Surveys	\$24,700
Total	\$123,325

Student Success & Professional Development April 2024- June 2026 \$278,500.65 Surveys, Professional Development, Check-Ins \$123,325.00	Total for All Services \$401,825.65
--	--

Student Success

Accelerate learning with an MTSS platform that meets ESSA Level II standards for evidence.



With student data and intervention workflows spread across multiple systems, it can be difficult and time-consuming to identify and respond to student needs. The evidence-based Student Success platform centralizes your MTSS data and workflows in one place to increase the efficiency of your decision-making and the effectiveness of your supports at every tier.



Easily track district, school, and student insights in one place



Intuitively pinpoint the strengths and growth areas of your MTSS



Quickly deliver student supports and monitor progress



An all-in-one, up-to-date MTSS platform

Nightly syncs with popular student information systems, district and state assessment data, and behavior systems give you a complete view of student performance across your district and schools.



Improved MTSS fidelity

District, school, and student dashboards help align your MTSS teams and practices. With this data, you'll deliver supports as intended, ensuring your implementation is faithful to your MTSS framework.



Research- and evidence-based strategies

Student Success offers classroom teachers intervention recommendations from Playbook, the trusted library of 700+ strategies exclusive to Panorama's district partners.



Time-saving intervention and progress monitoring tools

District leaders, administrators, and teachers can quickly edit, document, and evaluate interventions with a user-friendly workflow and dashboard that helps visualize progress across all tiers and intervention types.

"When I first came to Ogden, we did not have a system to be able to track our MTSS data and see where students were at.... Panorama changed that for us. It allowed us to be able to quickly make decisions and quickly see whether those decisions were working."

– Luke Rasmussen, Executive Dir. of Secondary Education, Ogden School District (UT)



Panorama Student Success Empowers Data-Informed Decision-Making

Unify your data for a comprehensive MTSS that supports the whole child

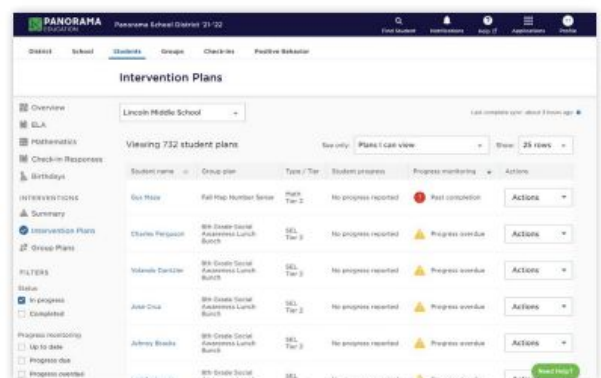
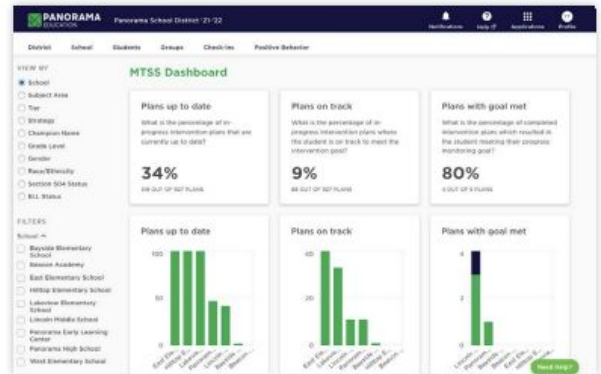
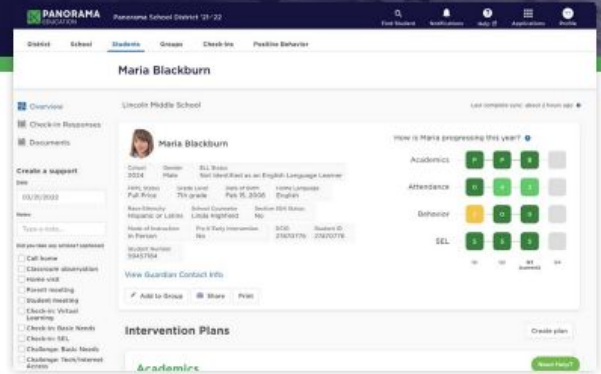
Bring academics, assessments, behavior, attendance, and SEL data together in one platform. Nightly syncs ensure you have the most up-to-date and accurate information to inform decision-making and improve outcomes.

Diagnose your MTSS strengths and areas for support

Dashboards make it easy to understand which interventions work, which are the most successful, if effectiveness varies across student groups, and more. With these insights, you'll allocate resources more effectively to strengthen Tier 1 supports while delivering targeted, individualized student interventions.

Focus on the interventions that drive student outcomes

With Student Success, you'll know what works. You'll ensure your MTSS supports every student with intervention and progress monitoring tools, including district-approved strategy recommendations, secure links to share students' progress with families, and streamlined view to manage individual and group plans.



2,000 district partners and counting



Professional Development Proposal

- **Comprehensive Focused Advising** - Monthly or 12x annually MTSS advising support with a dedicated professional learning advisor
- **4 Onsite Trainings**, each onsite facilitation includes a consultative planning session with a professional learning specialist and up to 6 hours of onsite facilitation for groups <50 (> 50 participants or concurrent sessions can be supported with additional facilitators at an additional cost).
- **Professional Development Workshops (Virtual) - 4 sessions** Includes one virtual consultative planning session with a professional learning manager/director and up to 90 minutes of virtual facilitation or consultations for groups <50.

PANORAMA PROFESSIONAL LEARNING MTSS Strategic Advising



Panorama's expert advisors partner with your team to embed Student Success into your district's MTSS vision and to ensure that educators have the tools, systems, and strategies to support students and improve outcomes.

Overview

MTSS Strategic Advising pairs district and school leadership with a dedicated Panorama advisor to meet specific goals connected to learning outcomes, capacity building, implementation, and/or MTSS system improvement—grounded in Student Success. Panorama's MTSS experts have experience supporting districts at any stage of MTSS implementation, from just getting started to established.

Advisors take an agile, collaborative approach that is tailored to the district's MTSS vision. Supports may include:

- Support with developing MTSS goals, vision, and practices
- Identifying local needs and strengths, often via a MTSS needs assessment
- Providing thought partnership in data-based action planning
- Collaborating to plan, design, and facilitate MTSS workshops and school-level consultations that are aligned to key strategic priorities
- Creating custom resources that support adoption of Student Success aligned to MTSS research and best practices
- Identifying key levers and high-impact strategies to meet district goals
- Providing technical guidance on product utilization, and strategic recommendations to embed tools and data into existing frameworks

Who Is MTSS Strategic Advising Best for?

Strategic Advising is best for schools and districts who recognize that adult learning and MTSS capacity building are core to their implementation of Student Success, and who are looking for deeper consultation and customization. This higher-impact service relies on dedicated internal capacity from school and district leadership to lead change efforts within their communities.

Levels of MTSS Advising Support

- **Program** includes monthly advising meetings in addition to your professional learning package and ongoing project support.
- **Comprehensive** includes bi-weekly advising meetings in addition to your professional learning package and ongoing project support.

Our Team

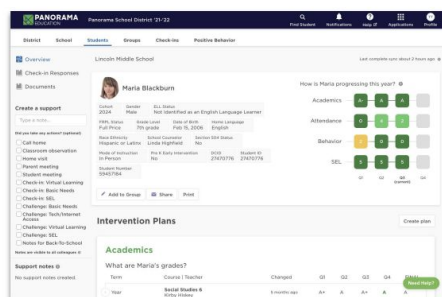
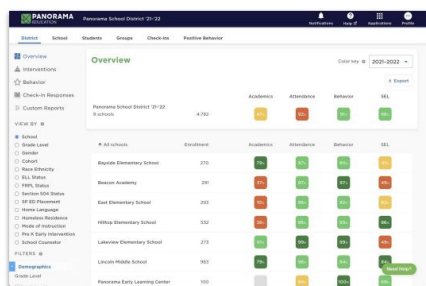
Panorama's Strategic Advising team is made up of subject matter experts who started their careers serving students directly, and who have held roles at the school, district, and state levels, including but not limited to: Assistant Superintendent, MTSS District Coach, Director of Teacher Development, and Manager of Professional Learning.

PANORAMA PROFESSIONAL LEARNING Overview: Student Success Workshops



[Panorama Student Success](#) is an all-in-one platform to strengthen systems of support. Insightful whole-child dashboards bring together information about student academics, attendance, behavior, and social-emotional learning, so that educators can make more data-driven decisions about student supports.

For districts and schools using Student Success, Panorama offers high-quality workshops to build a strong foundation in using Student Success to holistically support students. The trainings enable educators and administrators to apply data inquiry protocols, while building core platform knowledge and navigation skills.



Professional Development Cont.

PANORAMA PROFESSIONAL LEARNING



Overview: Student Success Workshops (Cont.)

Workshop Descriptions:

Foundational Features of Student Success - In this session, participants will understand the data streams and key features of Student Success so they leave prepared to begin to use the platform. Through guided practice, independent exploration, and group discussion cycles, participants will begin to analyze student data that is most relevant to them. Topics covered in sessions include: best practices for data inquiry across multiple data streams, understanding reports, making customized student groups based on data, creating individual and group interventions, and utilizing Panorama's Playbook to drive action. Based on the audience, our facilitators will highlight features most relevant to their role. Our facilitators will encourage role-specific reflection and dialogue, and offer leave-behind resources for additional learning opportunities. This workshop is continuously evolving as our products evolve to even better meet the needs of educators across the county. This is a great workshop on an annual basis and will be tailored to the unique needs of your school or district.

Respond to Results - This session will focus on equipping participants with data inquiry approaches to drive focused actions. Participants will engage in a scaffolded and interactive process using data-inquiry frameworks to explore their data and identify targeted opportunities for improvement and plan for next steps based on data. Participants will build proficiency with advanced Student Success features based on the needs of their role. This session will draw key connections between the various sources of data to advance educational excellence for every student, set specific and measurable improvement goals, and work towards establishing aligned strategies and a timetable for communication and implementation.

Embed Into Routines - This session will focus on empowering key stakeholders to use Student Success as the anchor of their data-based decision-making processes. Participants will work with colleagues to assess current Student Success routines and practices. Teams will learn how to strengthen decision-making processes and develop improvement strategies focused on building fidelity and efficiencies. Participants will hone their ability to use Student Success features to elevate their systems, structures, and supports.

Sustain and Grow - This session will focus on engaging the stakeholders across roles to reflect on established routines and progress to goals. Participants will identify and develop best practices and systems to maintain channels for the sustainability of tools, plan next actions, and drive continuous improvement.

Overview: Available content for MTSS focused Workshops

Workshop Descriptions:

Overview of MTSS - This session is designed to build essential background knowledge about MTSS as an organizing framework for meeting multifaceted student needs. Participants will build a common language about the key components of MTSS, and then reflect on the effectiveness of their current practices across each tier. Participants will come away from the session with a clear understanding of what MTSS is, how existing initiatives and practices already present in their work align with the MTSS framework, and where gaps may exist. Finally, participants will make connections between MTSS and Panorama, building their understanding of how Panorama can support the implementation of tiered supports for students.

Universal Supports - At the foundation of MTSS is the presence of a strong, universal instructional core and student support. This session will equip participants with a clear and precise understanding of the role that the universal tier plays in operationalizing MTSS, and the role that universal screening plays in strengthening the efficacy of the entire educational system. In this session, participants will engage in an inventory of key universal supports in their school setting, as well as areas where universal supports may need to be strengthened. Finally, participants will identify and draw connections between formative assessments and other key measures of universal support, such as Panorama surveys.

Tiered Interventions - In addition to a strong focus on universal core instruction, it is essential to build a common understanding of tiered interventions and the role that they play in effectively building out MTSS in school communities. Participants will engage in data-based decision-making to build capacity for aligning the best-fit interventions to student needs, and will learn to access and navigate Panorama's robust library of research- and evidence-based intervention strategies that embed seamlessly into the integration planning workflow within Student Success. Finally, participants will align progress monitoring methods to ensure both the fidelity of implementation of interventions and the effectiveness of the intervention for a student with need.

Integrating SEL and MTSS - In many settings, and until recently, the most common application of MTSS has focused primarily, if not exclusively, on student academic needs. As school communities embrace research-based best practices for addressing students' holistic needs (including behavioral and social-emotional needs), educators are seeking guidance on how to best integrate non-academic data into MTSS. In this session, participants will learn how to conceptualize SEL in relationship to MTSS, and will practice integrating research-based SEL support into the delivery of academic interventions for students with multi-faceted needs, or needs that span across domains of SEL, academics, attendance, and/or behavior. Finally, educators will learn how to avoid common "thinking traps," or pitfalls in interpreting and responding to SEL data in the context of MTSS, to support asset-based and student-first thinking and acting in schools.

Building a Problem-Solving Culture - Effective teaming structures and practices are essential for the operationalization of tiered supports at all levels of the education system. This session focuses on outlining effective teaming structures and practices that keep students at the center of data-driven decision-making and instruction, and capitalize on the power of collaboration across teams and roles. Participants will walk away with concrete resources and strategies to implement with their MTSS and student support teams, inclusive of data-based problem-solving protocols, guided data inquiry, and routines that ensure fidelity of implementation of interventions and consistent reflection on intervention efficacy for students.

Proof of Success: ESSA Study Results 2024

Panorama tools meet federal standards for evidence and impact

[Panorama Student Success](#) meets the [funding requirements](#) under the [Every Student Succeeds Act \(ESSA\) standards](#) for Level 2 and 4. In addition, [Panorama for Social-Emotional Learning \(SEL\)](#) and Panorama for Positive Behavior meet ESSA level 4 standards.

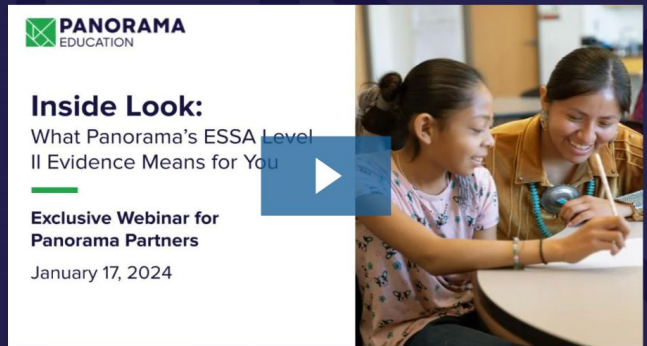
LearnPlatform, a third-party evaluator, has validated the effectiveness of Panorama Student Success to meet ESSA level 2 evidence:

- Using Student Success was shown to significantly impact student learning
- Student gains of 6 percentile points in math and 8 percentile points in reading were associated with even modest use of Panorama
- Using Student Success to track interventions was associated with gains of 6 percentile points in math and 4 percentile points in reading scores
- And increased use of Student Success resulted in even greater gains

RECORDED WEBINAR FOR PANORAMA PARTNERS

Inside Look: What Panorama's ESSA Level II Evidence Means for You

Aired Wednesday, January 17, 2024



[Link to Webinar](#)

Resources:

Session Resources:

- [ESSA Level 2 Impact Study](#)
- [MTSS Teams Data Inquiry Scope & Sequence](#)
- [Tier 1 Agenda Template](#)
- [Tier 2 & 3 Agenda Template](#)
- [Sample Data Decision Rules for Intervention Progress Monitoring \(Entry/Exit Criteria\)](#)

Panorama Teaching & Learning Resources:

- [Executive Briefings](#)
- [Consultations](#)
- [Strategic Advising](#)
- [MTSS Strategic Advising](#)
- [Panorama Community Workshops \(Live\)](#)
- [Panorama Community Workshops \(Recordings\)](#)
- [Professional Development Guide](#)

How Durham Public Schools (NC) Uses Panorama Student Success To Unlock Their Vision for MTSS



Kristi Orange



DURHAM
PUBLIC SCHOOLS

[Link to Blog Post](#)

District leaders and educators in [Durham Public Schools, North Carolina](#), have a vision that every student receives the support they need to succeed in school—and beyond—to live their best lives. Providing that support requires a robust MTSS with a unified data platform to support it.

Durham Public Schools began their partnership with Panorama in 2020 to run student surveys. In 2022 they adopted [Panorama Student Success](#) to develop and implement a successful MTSS that supports every student.

The eighth largest school system in North Carolina, Durham Public Schools serves over 33,000 students. They utilize the Panorama platform to realize a shared vision for the district and the success of each of those students.

We sat down with Durham Public Schools leadership to learn their stories. In this video you'll hear from:

- **Dr. LaVerne Mattocks-Perry**, Sr. Executive Director of Student Support Services, Durham Public Schools
- **Dr. Letisha Judd-Manning**, Director of Integrated Academic and Behavior Systems, Durham Public Schools
- **Asia Cunningham**, Principal, Pearsontown Elementary, Durham Public Schools
- **Dr. Al Royster**, Executive Director of Research and Accountability, Durham Public Schools
- **Nelson Surles**, Director of Data Integration and Accountability, Durham Public Schools